

# Supreme Services Product Catalog

## A Word From the President

With more than 30 years in a volatile industry, sustainability means more than just being around for Supreme; it encompasses continued, committed leadership, quality, safety, innovation, and protection of the environment and the community. Sustainability at Supreme is also about moving forward as a thriving successful business. A challenge in today's business market that we have met throughout our past, and our team will continue to meet.

Being the largest independent specialty rental company in the industry, Supreme has built a strong reputation by providing quality products and services that meet and exceed our customer's expectations. Through state of the art and patented technology we will continue to lead the way in our industry.

We must also realize that Team Supreme is made up of more than just the products and services we produce, our commitment also carries over to our personnel, customers, and the communities in which we operate. Supreme's culture is ever changing with the continuous expansion of it's team members and facilities. As a pillar of our business principles it is essential that we provide not only a safe atmosphere but a rewarding career to each of our team members. Understanding how much we can impact our surrounding communities in a positive way, it is very important to Supreme that we reach beyond our team members and participate and contribute to our community, non-profit organizations, and industry affiliations.

Additionally, we believe that health, safety and the environment has a vested interest in Supreme, and vice versa, without taking care of "one and the other." there will be neither. Through ongoing implementation of Supreme's innovative "SQIP" (Safety and Quality Incentive Program). Team members are rewarded by increasing efficiency and reducing waste while employing the best safe work practices for good health and a clean environment.

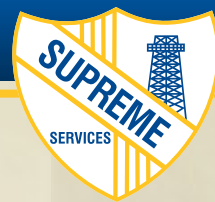
Strong convictions, and a core set of values are integral to our organization. As we move forward, it's imperative that we continue to follow each conviction, value, and principle we have set forth assuring sustainability for future generations.

Sincerely,

A handwritten signature in black ink that reads "Tommy Fanguy". The script is fluid and cursive, with the first letters of each word being capitalized and larger than the rest of the letters.

Tommy Fanguy

President/CEO Supreme Services



## Mission Statement

### Supreme Service & Specialty Co., Inc. Mission Statement

Supreme Service & Specialty Co., Inc. is a provider of specialty rental equipment and services to the oil and gas industry. We ensure all our equipment is rebuilt to the highest industry standards, and that our service technicians are trained and very competent in their job duties. Supreme Services has a large and diverse inventory of oil and gas service equipment, and progressively strives to be the customers first choice partner. We do so, by understanding our customers' needs, requirements, and providing the highest level of quality equipment and services. Our continuous goal is to assist our customers' in eliminating wasted cost, increasing productivity, in conjunction with meeting and exceeding customer requirements.



# Quality Policy

## Quality Guarantee

Supreme Services' quality policy is to provide and deliver products and services which meet or exceed our customer requirements, while working toward continual improvements and customer satisfaction. This goal is achieved through the establishment of a quality management system designed to ensure product conformity, provide measurements of its processes and utilize the measurements for continual improvement of its processes.

All Supreme Services' management is committed to ensuring that this policy is understood, implemented and maintained at all levels of the organization. All personnel shall understand this policy and how each individual contributes to the company's quality objectives. This policy shall be communicated by introductory orientations, posting of the policy throughout each organization's facilities, and acquaintance of our suppliers to the Supreme Services' quality policy.

The authority to implement, manage and enforce the quality assurance system has been delegated to the quality assurance manager. Although quality assurance and quality control personnel operate and maintain the quality system, all SSI personnel and suppliers share the responsibility for providing quality products and service to our customers and are encouraged to be actively involved in defect prevention, early detection, and corrective action of discrepancies. This quality policy shall be reviewed for continuous suitability during the quality management annual review.

## Quality Objectives

- Maintain an effective Quality Management System.
- Provide products and services that satisfy customer requirements.
- Evaluate corrective actions to reduce repetitive discrepancies.

## Operations

- All SSI rental tools and FRAC equipment are tested and inspected per SSI procedures, TH Hill DS-1, applicable API requirements, or customer specifications.
- All NDE inspections are done by a Level II inspectors per ASNT standards, SSI procedures, or manufacturer's specifications.



## HSE Policy

Supreme Service & Specialty Co., Inc. (SSI) is committed to leadership in health and safety, and to the environment. In stating this we shall set examples of awareness to all of our team members that their participation is critical to a well maintained HSE Management System.

Health, Safety & Environment is a responsibility shared equally and without exception by everyone within our organization. All personnel are accountable for the safety of themselves and that of other persons who may be affected by their actions; as well as the impact those actions may have on our environment.

The Health, Safety, and Environmental aspects of our everyday business and operations shall be considered as critically important as other business objectives. SSI shall be proactive to promote higher industry standards in conjunction with our customers and governing bodies. We shall meet or exceed all regulatory, customer and standard industry practice requirements through continuous improvement.

The management and staff of SSI remain committed to continued enhancement of sound policies and procedures that will in effect protect our team members, clients, visitors, and the communities in which we work in and around.

*Tommy Fanguy*

Tommy Fanguy

President

*Bobby Fanguy*

Bobby Fanguy

Vice President

# Managing the Health Safety and Environment Policy

Our commitment to this program will enable us to achieve HSE Excellence by implementing the following principles:

Safety must be planned into every job. Identifying the risks and potential hazards of the work and the work environment is a continuing obligation of management and personnel. Safety, job competence, and work efficiency go together for a successful and profitable job. Safety is a condition of employment, and all team members must exhibit a conscientious effort of health and safety responsibility.

People are the most essential element of the program because concerned, involved, and trained personnel are Supreme Services' greatest resource.

Health and safety rules are important because they set certain behavioral procedures to be followed. Developing, reinforcing, and updating these rules are a continuous activity and usually result from lessons learned and past experiences.

A team member who has been properly instructed by the first-line supervisor is more likely to perform a job conscientiously, efficiently, safely, and correctly the very first time it is done. Taking time to do a job right the first time minimizes the potential risk to personnel.

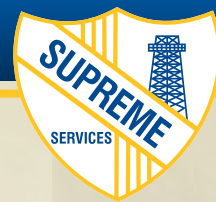
For safe work practices to become work habits, a detailed Job Safety Analysis (JSA) should be provided on new, different, unusual, or critical jobs or when variations occur.

Conducting group safety meetings allows health and safety information to be distributed to the workforce. Frequent reminders and opportunities to "tell why" are necessary to train, motivate, convince, and educate personnel to perform their work in the most productive and safe manner.

Ongoing operations that cause equipment to become defective because of normal wear and tear create unsafe conditions and possible downtime. Through inspections and preventative maintenance programs, the chance of accidents and downtime because of "sudden" failures is reduced, and undesirable situations are corrected before losses occur.

Investigating accidents leads to accident prevention. Learning from losses, establishing controls, and conducting follow-ups keeps similar accidents from happening. Sharing investigative findings from other areas to help all work areas makes the most of lessons learned.





# HSE and Quality Assurance

## API and ISO Registered SEMS Compliant

Supreme Service & Specialty Co, Inc. maintains subscriptions and updated profiles with ISNetworld and PEC/ Premier Safety Management System in line with customer reporting requirements. If additional HSE statistical information is required, this request should be made to the HSE Department of SSI.

The American Petroleum Institute (API) and the American Petroleum Institute Quality Registrar (APIQR) certified that the Quality Management System of Supreme Service & Specialty Co., Inc. has been assessed and found to be in conformance of API Specification Q2 and ISO 9001:2015 for the Houma, LA and Broussard, LA districts. The scope of this registration and the approved quality management system applies to the following for each district:

- SSI Houma, LA District Scope of Registration: Rental, Distribution and Rig Up/Rig Down of Oilfield Tools and Frac Equipment Support for the Oil and Gas Industry.
- SSI Broussard, LA District Scope of Registration: Rental and Rig Up/Rig Down of Oilfield Tools, Pumping Support and Pressure Control Equipment Support for the Oil and Gas Industry.
- Disclaimer: Although located at the same physical address, Supreme Thru Tubing Services is not included within the QMS scope of registration for the SSI Broussard, LA District.

API Spec Q2 is the first ever quality management system (QMS) certification for service supply organizations in the oil and natural gas industry. Its approach to industry improvement is similar to that of API Spec Q1, which certifies oil and gas equipment manufacturers for the safety, consistency and interchangeability of their products.

Development of Spec Q2 began in early 2010 to reduce risk and improve service quality by identifying and standardizing the expectations for execution of upstream services like well construction, intervention, production and abandonment. API accelerated its work following the Macondo incident, and the standard was officially unveiled in December 2011.

ISO 9001:2015 Registered

Houma: APIQR 3268

Broussard: APIQR 3269

API Spec Q2 Registered

Houma: Q2-0160

Broussard: Q2-0161

## Table of Contents

### > Offshore Services:

Rental Services .....	pg. 9
Frac Assist.....	pg. 36
Offshore Pumping Support .....	pg. 44
Wireline Support.....	pg. 60

### > Fluid Transfer Services:

Fluid Transfer Systems.....	pg. 30
-----------------------------	--------

### > Natural Gamma Services:

Natural Gamma Products.....	pg. 34
-----------------------------	--------

### > Flameless Thermal Equipment and Services:

Flameless Thermal Products .....	pg. 41
----------------------------------	--------

### > Land Services:

Land Pumping Support.....	pg. 53
---------------------------	--------

### > Supreme Offshore Services:

Supreme Offshore Services Fleet.....	pg. 70
--------------------------------------	--------

### > Supreme Inventory Management Services:

Inventory Management and Storage.....	pg. 72
---------------------------------------	--------



# Rental Tools and Services

Supreme Services offers top quality, high pressure equipment, for land, shelf, and deep water projects, with highly trained personnel to maintain, manage, and execute your rental needs flawlessly.

Supreme Services offshore equipment meets or exceeds all offshore lifting requirements, including engineered design crash frames to meet or exceed API RP2A 2.2 lift standards. Equipment is tested, inspected and maintained in accordance to ASNT, ABS, BSI EN-120979 1999 and DNV 2.7-1.

Offshore diesel driven equipment is equipped with all safety system requirements, including wrapped exhausts with spark arrestors, emergency shut downs, drip pans, and when required air starters and overspeed shut downs.

With multiple facilities throughout Louisiana and Texas, Supreme is capable of supplying specialty tools for the following operations:

- Cementing
- Coiled Tubing
- Drill Stem Testing
- Drilling Services
- Fishing
- Flow Backs
- Fluid Transfer
- Fracturing
- Electric Line
- Hose Reels
- Natural Gamma Products
- Pipeline
- Pumping
- Sand Control
- Snubbing/Workover
- Slickline
- Stimulations
- Subs/Workstring
- Thru Tubing Services
- TCP Services
- Well Testing
- Well Abandonment

Supreme Services also has an in-house engineering team equipped with the latest technology and ability to design new tools to meet the ever-changing needs of the industry.

## > Accumulators

Accumulators in stock ranging from 2.5 gallons to 54 gallons with multiple banks available. All accumulator units are offshore compliant.

### Options:

- 2.5 gallons - 54 gallons
- Pressure ratings: 0 - 3000 psi
- Multiple configurations available
- Single-Seven banks
- Accumulator system with full API 16ST close-open-close capacity.



## > Air Compressors

### Bulk Air Compressors

- Bulk air compressors deliver 250 CFM @ 35 psi.
- These compressors are typically used for bulk tank operations.



### Medium Pressure Air Compressors

- Medium pressure air compressors range from 185 CFM to 375 CFM @ 120 psi.
- Class 1 Div 2 and standard engines available.



### > Blow Out Preventers

#### Product Specs:

- Bore Sizes: 2  $\frac{1}{16}$ , 3  $\frac{1}{16}$ , 4  $\frac{1}{16}$ , 5  $\frac{1}{8}$
- Pressure Ratings: 10,000 - 15,000 psi
- Configurations Available: Single, Double, Triple, Quad, Blind Shear, and Dual Combi's.
- Ram Types: Blind Shear, Slip, Pipe, Shear Seal, Pipe Slip, and Duals.

#### Product Features:

- Compact
- Integral Equalizing Valves
- Well Pressure Isolated Seals
- Integral Hydraulic Porting
- Ram Position Indicator
- Non-rising Manual Locks
- Multi-cut Super Shear Blades
- Replaceable Slip Inserts
- Easy Maintenance
- Manual Locks
- Flow Cross



### > Coil Tubing Work Basket

#### Product Description:

The coil tubing work basket offers a stable work platform that bolts up above or below B.O.P.'s without any interference to the wellbore. Additional features include a safety jib with anti-fall device, work plates to make-up tools, and an area to hang tools that will be used. Available in multiple sizes and pressure ratings.

**Patent # 6,681,894**



## > Offshore Lighting

### Magnum Offshore Lighting System

- 1000W Metal Halide hazardous location Class 1 Division 2 rated flood lights
- 400W Metal Halide hazardous location Class 1 Division 2 rated flood lights
- Auxillary outlets
- 50 gallon fuel supply
- 20 ft. Manual Telescoping Tower
- Will illuminate up to 116,000 sq. ft.
- Compact Design



### Standard Offshore Light Tower

- 400W Metal Halide hazardous location Class 1 Division 2 rated flood lights powered by Kubota and Isuzu diesel engines
- 50 gallon fuel supply
- 20 ft. Manual Telescoping Tower
- Will illuminate up to 56,000 sq. ft.



### Portable Light Stands

- 400W Metal Halide hazardous location Class 1 Division 2 available in multiple configurations
- Equipped with a 50 ft. fixture cord with explosion proof plug
- Fixtures mounted on aluminum tripod stand which will adjust up to 11 ft. and will illuminate up to 28,000 sq. ft.

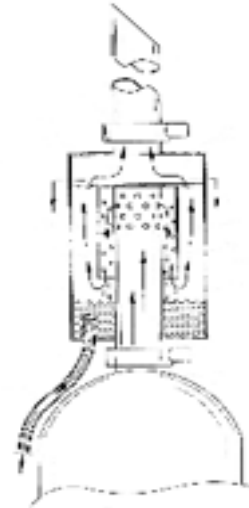


### > Reclamation Unit

#### Product Description:

This unit is designed to collect liquids including oil and water emitted from a gas buster exhaust stack. The reclamation unit includes baffling, liquid float, and a discharge line for returning the liquids to a reservoir. Multiple units may be connected to contain potentially greater discharges.

Patent # 7,198,659 B1



### > Coiled Tubing Jacking Stand

#### Product Description:

Coiled tubing jacking stands are primarily used to hydraulically support the coiled tubing injector assembly without the assistance of a crane, thus allowing the crane to be used for simultaneous auxiliary operations. Stands are designed to accommodate different injector sizes.

#### Product Specs:

- Dimensions: 8'W x 8'L x 9'2"H
- Weight: 5,400 lbs.
- Adapters available for different size injector heads.





## > Chart Recorders

### Product Description:

The model 202E, 242E, and 202N Barton recorder utilizes a 12" chart that has been widely used in gas transmission, and distribution fields accurate calibration, even under extreme variations in static pressure and ambient temperatures. The 202E is available in 1 to 4 pen configurations (DP+3 additional pens). The additional pens can be used to record temperature and supplemental pressure data.

#### Barton Recorders

- Pressure Range: 0 - 30,000 psi



## > Lubricator

### Product Description:

Its purpose is to allow the wireline tool string to be raised above the wellhead prior to and after wireline operations. Therefore enabling the wellhead valve to be opened and closed, allowing entry and exit from the wellbore.

During slickline operations, three lubricator sections are normally used, each having a different ID, the uppermost section having the smallest, then opening out to the lower section with largest ID. During E-line operations the lubricators normally have the same ID.

- Sizes Ranging from: 3" - 9 5/8"
- Pressure Ratings from: 5,000 - 15,000 psi
- Standard and H2S Service





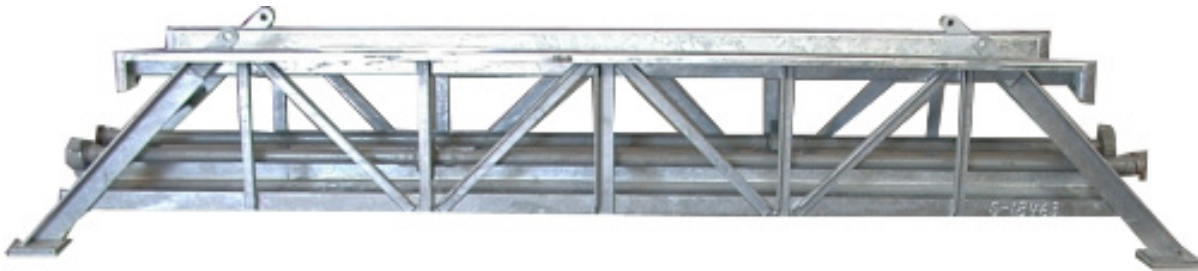
### > Safety Bridge

#### Product Description:

This bridge will reduce high pressure pup joints and hoses hanging over the side of the boat running to the platform, which will mitigate spills overboard.

#### Features:

- Will accomdate 1" - 4" flow iron.
- Drip pan to catch any material spills.
- Rounded corners to prevent hose damage.
- Padded footings to avoid metal to metal contact.
- Available in 15', 20', and 30' sections.
- Can be custom built to customer specifications.
- Fully inclosed manifold for safety precautions.



### > Nitrogen Bottle Racks

#### Product Description:

Nitrogen bottle racks are primarily used to purge coiled tubing reels, but can be used for many applications including degasing. Bottles average 2500 psi each. Racks are equipped with 25 ft. of discharge hose with 2" 1502 wing connections.

- 6 Bottle Rack: 2010 scf
- 8 Bottle Rack: 2680 scf
- 12 Bottle Rack: 4020 scf
- 24 Bottle Rack: 8040 scf



## > Pump in Subs

### Product Description:

The installation location is customer dependant, but its uses are fairly common and straight forward. The pump-in sub allows for well control by providing a port to “pump-in” fluids. The fact that the upper and lower thread designs are made to various combinations, makes the pump-in sub a perfect connection cross-over point.

### Product Specs:

- Sizes Ranging from: 1” - 4”
- Working Pressure: 5,000 - 15,000 psi
- Available in standard or H2S service

### Note:

- Pressure and service, dependant on union requested.
- Various threads available
- Side entry available
- Larger sizes available as circulating swedges



## > Circulating Swedge

### Product Specs:

- Primarily used to pump into casing
- Sizes Ranging from: 4 ½” - 20”
- Pressure Ratings: 5,000 - 15,000 psi

### Note:

- Pressure and service, dependant on union requested.
- Various threads available



### > Equipment Baskets



Supreme has one of the largest selection of offshore baskets in the industry. All of the materials used in the fabrication of our baskets meet or exceed ASTM A36, and are welded by certified welders in accordance with AWS D1.1 structural welding requirements. All baskets are seal welded and have plasma cut drain holes as per Supreme specifications. Supreme baskets are tested/inspected in accordance to ASNT, ABS, BSI EN-12079 1999, and DNV 2.7 – 1, giving you the maximum assurance of safety and reliability.

#### Sizes:

- Ranging from: 4' - 96' Long

#### Designs:

- Pipe Baskets
- Equipment Baskets
- Completion Assembly Carrier
- Stackable and Interlocking Baskets
- Coflex Baskets

#### Optional Equipment:

- Aluminum Covers
- Binders
- Bolsters
- Slings

## > Wash Pipe and Tubing

Supreme has one of the largest offering of specialty tubing in the industry.

### Product Specs:

- Sizes Ranging from: 1.050 - 4.50 in OD
- Grades: N80, L80, P110, S135

### Features:

- Flush Joint
- Two Step Premium
- 8 and 10 Round
- Drill Pipe Available
- Heavy Wall
- Standard and H2S Service
- Pup Joints and Crossover Subs
- Associated Handling Equipment



**Flush Joint Wash Pipe**

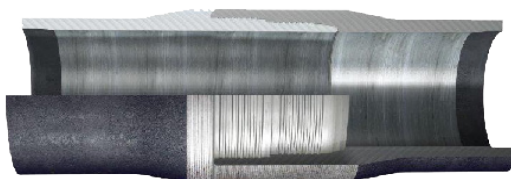


**Pup Joint**



**Crossover Sub**

## > Workstring



Size (O.D.) and Weight (Nominal)	Tubing Connection						Recommended Makeup Torque		
	Wall Thick	I.D. (NOM)	Drift Diam.	Pin Length	O.D. Turned	I.D. Bored	J-55	C-75 N-80	P-105
Inches	Inches	Inches	Inches	Inches	Inches	Inches	Ft. - Lbs.	Ft. - Lbs.	Ft. - Lbs.
2 7/8 - 7.9	.276	2.323	2.229	2.951	3 1/16	2.265	2200	3000	3500

## Rental Tools and Services

### > Wash Pipe Data

Nominal Size	Thread Description	Pipe Weight	Pipe OD	Pipe ID	API Drift in	Pipe Grade API	Critical Section (sq. in.)	Failure Location (Thread, Body)	API Min. Yielding Load (IBF)	API Min. Failing Load (IBF)	Min. Make-Up (ft' lb)	Opt. Make-Up (ft' lb)	Max. Make-Up (ft' lb)
1"	FJ	2.25	1.315	0.957	0.848	P110	.37985 (P)		41,784	47,481	140	157	175
1.315							.456 (B)						
1 ¼"													
1.66	FJ	3.02	1.66	1.278	1.184	P110	.50346		55,359	62,933	180	200	225
1 ½"													
1.9	FJ	3.64	1.9	1.5	1.406	P110	.605(P)		66,579	75,625	240	270	300
							.6186(B)						
2 ⅛"													
2.063	FJ	4.5	2.063	1.613	1.519	N80	.668(P)		53,431	66,789	350	387	425
							.836(B)		66,880				
2.063	511	4.5	2.063	1.613	1.519	P110	.788		86,680	98,500	600	675	750
2 ⅝"													
2.125	1 ½" CS	6.057	2.125	1.5	1.406	4130	.9442		52,873	75,534	800	900	1000
							1.0413		58,313				
2 ¾"													
2.375	FJ	5.95	2.375	1.867	1.773	N80	.6426(P)		51,409	61,151	400	450	500
							.61151(B)		48,921				
2.375	2 ⅛" CS	7.7	2.375	1.703	1.609	N80	1.1263(P)		90,102	112,630	900	1010	1125
							1.354(B)		108,334				
2.375	511	4.65	2.375	1.995	1.901	P110	.78		85,910	97,625	600	675	750
2 ⅞"													
2.875	FJ	6.4	2.875	2.441	2.347	N80	.863(P)		69,071	86,300	600	675	750
							.89278		71,422				
2.875	511	6.4	2.875	2.441	2.347	P110	.996		109,560	124,500	750	844	938
3 ½"													
3.5	FJ	9.2	3.5	2.992	2.867	N80	1.33		106,400	133,000	800	900	1000
3.5	511	9.2	3.5	2.992	2.867	L80	1.578		126,240	149,910	1250	1406	1562
3.5	511	9.2	3.5	2.992	2.867	P110	1.578		173,580	197,250	1200	1400	N/A
4"													
4	FJ	11.6	4	3.428	3.303	N80	1.803		106,400	180,300	1100	1237	1375
4	511	11.6	4	3.428	3.303	L80	1.803		144,240	171,285	1700	1850	2000
4	511	11.6	4	3.428	3.303	P110	2.035		223,850	254,375	1700	2000	N/A
4 ½"													
4.5	FJ	12.6	4.5	3.958	3.833	N80	1.891		151,280	189,100	1500	1687	1875

## ➤ Gravel Pack Accessories

Supreme offers a full line of accessories needed to complete a successful gravel pack.

- Accutorque Wrenches
- Bails
- Baskets
- Bowl and Slips
- Chart Recorders
- Clamps
- Crossover subs
- Collars
- Drifts
- Elevators
- Filter Units
- Flush Joint Pipe
- Flush Joint Pups
- Gauges
- Gauge Hangers
- Kill Subs
- Lift Nubbings
- Lift Subs
- Manifolds
- Mule Shoe
- Nipples
- Pump in Subs
- Pup Joints
- Rotary Plates
- Rotary Slips
- Screen Plates
- Screen Tables
- Stabbing Guides
- Stripping Plates
- Tanks
- Tongs
- Tubing
- Valves





## Rental Tools and Services

### > Elevators

#### Bottle Neck Elevators

- Sizes Ranging from: 2  $\frac{3}{8}$ " - 6  $\frac{5}{8}$ "
- Rated Capacity: 150 - 500 Tons



#### Slip Type Elevators

- Sizes Ranging from:  $\frac{3}{4}$ " - 7  $\frac{5}{8}$ "
- Rated Capacity: 40 - 200 Tons



#### Square Shoulder Elevators

- Sizes Ranging from:  $\frac{3}{4}$ " - 7  $\frac{5}{8}$ "
- Rated Capacity: 40 - 200 Tons



## > Hand Tongs

### Product Description:

Tongs incorporate a wrap-around design with approximately 300° of die contact to minimize cutting or crushing of the pipe. All tongs are pull tested and documentation is available.

#### K 25 Tubing Tong

- Size Ranging from:  $\frac{3}{4}$ " -  $3\frac{1}{16}$ "
- Torque Rating: 2,000 ft. lbs.

#### K 30 Tubing Tong

- Size Ranging from:  $\frac{3}{4}$ " -  $4\frac{1}{8}$ "
- Torque Rating: 5,000 ft. lbs.

#### K 50 Tubing Tong

- Size Ranging from:  $2\frac{3}{8}$ " -  $5\frac{1}{2}$ "
- Torque Rating: 7,500 ft. lbs.

#### K 70 Tubing & Casing Tong

- Sizes Ranging from:  $5\frac{1}{2}$ " - 7"
- Torque Rating: 15,000 ft. lbs.



## > Accutorque Wrenches

### Product Description:

Every threaded connection has a proper torque value. This tool will enable the correct make-up torque every time. Great for wash pipe, well screens, and other down hole tools. This tool will take the guess work out of tightening up connections. The accutorque wrench will torque connections up to  $3\frac{1}{2}$ " OD without the hassle of bulky machines.

Patent # US 6,439, 064



## Rental Tools and Services

### > Slips

#### UC 3 Casing Slip:

This slip has a 3" taper designed with a single liner per segment and a liner keeper assembly with bolt and washer. It has a size range of 9  $\frac{5}{8}$ " through 42" and is accomplished with two sizes of slips — 9  $\frac{5}{8}$ " through 10  $\frac{3}{4}$ " and 13  $\frac{3}{8}$ " through 42". The size range is covered with a quick change in the number of segments and liners.

#### CMS XL API Casing Slip:

This slip has a 4" Taper and a range of 6  $\frac{5}{8}$ " through 30" which can be accomplished by adding or subtracting the number of segments and installing the proper button sizes.

#### CPS Conductor Pipe Slip:

This slip has a 4" taper and is used on 24", 26", and 30" conductor pipe. It is completely interchangeable with the CMSXL slip except for hinged spacer blocks.

#### CMS 33 Taper Slip:

Designed with a 3" taper to fit spiders and bushings with the same taper. The CMS-3 has a size range of 9  $\frac{5}{8}$ " - 30" and can be accomplished the same way as the CMSXL.

- Casing
- Drill Collar
- Rotary



Rotary Slip



Drill Collar Slip

## > Clamps

The safety clamp is one of the most valuable tools on the rig floor. It helps guard against dropping flush-joint pipe, streamlined drill collars, etc. into the hole while making-up or breaking-out the string.

### Type "T"

- Size Range: 1 1/8" through 4 1/2"

### Type "C"

- Size Range: 3 3/4" through 43"

### Lifting Clevises

- Size Range: 10 1/2" through 43"



## > Supreme Flow Line Restraints

Supreme flow line restraints have a two-ply cover which protects the internal yarn.

- Water Repellent
- Durable warning tag provides serial number traceability and re-certification history
- Soft and light weight for easy rigging, handling, and storage
- Color coded for positive restraint model identification
- Red-striped white core warning yarns provide positive indication for restraint replacement
- Easily conforms to the shape of the temporary piping

Color	Lbs./Ft.	B. Dia	M/Hdw
2" Yellow	.90	1.25	1.05
3" Orange	1.3	1.75	1.5" Alloy
4" Green	1.7	2.0	1.5" Alloy



### > Chiksan Iron

#### Straights

- Sizes Ranging from: 1" - 4"
- Lengths Ranging from: 1' - 30'
- Pressure Ratings: 5,000 - 20,000 psi
- Standard and H2S service available



#### Loops

- Sizes Ranging from: 1" - 4"
- Pressure Ratings: 5,000 - 20,000 psi
- Standard and H2S service available



#### Swivels

- Sizes Ranging from: 1" - 4"
- Pressure Ratings: 5,000 - 20,000 psi
- Standard and H2S service available



## > Gate Valves

### Product Specs:

- Sizes Ranging from: 1  $\frac{1}{4}$ " - 7  $\frac{1}{4}$ " ID
- Pressure Ratings: 5,000 - 20,000 psi
- Manually and Hydraulically Actuated
- Standard and H2S service available



## > Plug Valves

### Product Specs:

- Sizes Ranging from: 1" - 5" ID
- Pressure Ratings: 5,000 - 20,000 psi
- Manually and Hydraulically Actuated
- Standard and H2S service available



## > TIW/Kelly Valves

### TIW Valve

The ball-type valve provides a quick, sure shutoff in the work-string that can repay the rental cost of the valve quickly in fluid savings and kick protection. The valve is designed to hold pressure in one direction only.

### Kelly Valve

The ball-type valve provides a quick, sure shutoff in the work-string that can repay the rental cost of the valve quickly in fluid savings and kick protection. The valve is designed to hold pressure in either direction.

- Size Ranging from: 1" - 4  $\frac{1}{2}$ "
- Pressure Ranges from: 5,000 - 20,000 psi





### > Adapter Spools and Spacer Spools

#### Adapter Spools

- Sizes Ranging from: 1  $\frac{1}{16}$ " - 13  $\frac{5}{8}$ "
- Pressure Ratings: 200 - 20,000 psi
- Single or Double Studded
- Open Face
- Center Bore
- Single, Dual, and Triple Offset



#### Spacer Spools

- Lengths Ranging from: 1' - 30'
- Standard and H2S service available



### > Tree Connections and Filter Units

#### Tree Connections

- Sizes Ranging from: 1  $\frac{1}{16}$ " - 13  $\frac{5}{8}$ "
- Pressure Ratings: 200 - 20,000 psi
- Standard and H2S service available



#### 2" 1502 High Pressure Filter Unit

- Compact design (L 5'8" X W 3'10" X H 5'3")
- Dual Pod, 4 Filters per pod.
- 15,000 psi working pressure
- 2 BBL. Per Minute Max Pumping Rate
- Safety cantilevers to assist in lid removal.



#### 3" Low Pressure Filter Unit

- Compact design (L 4' X W 4' X H 5'5")
- Dual Pod, 15 Filters per pod.
- 150 psi working pressure
- Safety cantilevers to assist in lid removal.



## > Tanks

### Product Specs:

- Frac Tanks
- Cement Blenders
- P-Tanks
- 24 bbl Poly Tanks w/ Blender
- Stainless Steel Tanks
- Sand Dehydration Tanks
- Cutting Boxes
- Palet Boxes



**100 BBL Tank**

### Open Top Tank Information:

Tank Size	Height	Width	Length	Weight	Compartment Capacity	Number of Compartments	Number of Mixer Compartments
200 BBL	10.8'	8.5'	20'	17,500 lbs.	66.6 BBL	3	2
200 BBL with lid							
120 BBL with lid							
100 BBL with Retractable Gas Buster	10'	8.6'	20'	16,500 lbs.	33.3 BBL	3	2
100 BBL	9.2'	8'	12.65	8,150 lbs.	33.3 BBL	3	2
50 BBL	8.5'	8'	8.5	4,200 lbs.	25 BBL	3	2
25 BBL	7.8'	6.4'	8.4'	3,500 lbs.	12.5 BBL	2	1 or 2

## > Gas Buster

### Product Specs:

- Supremes' gas buster unit is 48" tall and comes with two additional stack extensions.
- The max fluid rate for the gas buster is 7.14 BBL/Min.
- The gas buster can be mounted on any of the existing tanks upon customer request.



**100 BBL Tank With Retractable Gas Buster**

### > Manifolds

#### Product Specs:

- Sizes Ranging from: 1" - 5" ID
- Pressure Ratings: 5,000 - 20,000 psi
- Manually and Hydraulically Actuated
- Standard and H2S services available
- Can build to customer specification



### > Pressure Relief Valves

These valves are primarily used for emergency relief where pressures must be relieved quickly to reduce damage that could result from overpressure in a system.

#### Product Specs:

- Sizes Ranging from: 1" - 5" ID
- Pressure Ratings: 125 - 20,000 psi
- Standard and H2S service available
- Mechanically or Nitrogen operated



### > Chokes

#### Product Specs:

- Sizes Ranging from: 1" - 5" ID
- Pressure Ratings: 5,000 - 20,000 psi
- Standard and H2S service available
- Manual or Hydraulically operated
- Positive chokes available upon request



## > Impulse Accelerator

### Product Description:

The Impulse Accelerator© is a “true” fluidic oscillation tool system. True fluidic oscillation technology is a proven technology that has been successfully used to correct problems in more than 7,500 wells, from 90 ft. to 27,000 ft. deep on coiled tubing, jointed pipe stimulation, and workover operations around the world. The treatment design and execution varies according to well conditions and the customers goals. The Impulse Accelerator© enables operators to maximize their stimulation and workover dollars by dramatically increasing the effectiveness of their treatment fluids, and by cutting days off the job schedule. Whether our tools are used for simple well bore cleanouts or for the primary stimulation of producing zones, Supreme Services is ready to increase your profitability.



**Impulse Accelerator**

### Applications:

- Removal of scale and other deposits.
- Primary stimulation of high permeability formations.
- Preparation for gravel packing or frac packing.
- Preparation for follow-up stimulation treatments.
- Clean out fill from open hole or casing.
- Alteration of injection profiles.
- Correct placement of treating chemicals.



**Bladed Mill**



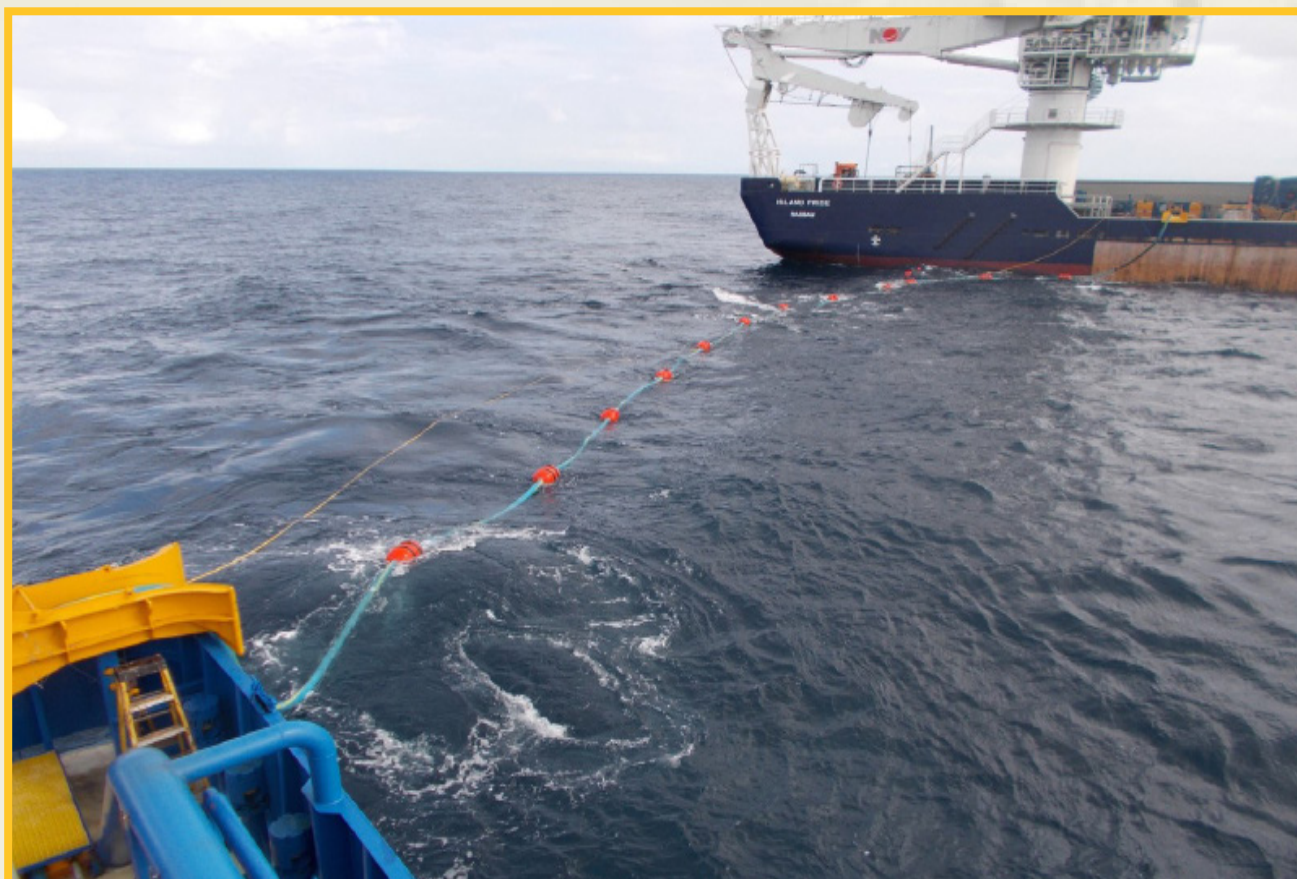
**Stim Mill**

## Fluid Transfer Systems

### Fluid Transfer Systems

Supreme Services offers a safe and convenient way to assist in your fluid transfer needs. Introducing our fluid transfer hose reel system.

Our system with notice can be fitted with 2", 3", 4", and even 6" heavy duty marine hose that can handle oil, water, frac fluid, and even acid. Supreme also offers shut-off safety systems for your over water transfers. Our system are tested in accordance to U.S. Coast Guard requirements. Our systems are "Totally Air Powered," but most of all very easy to operate. Supreme can offer one day seminars on operational and maintenance of our fluid transfer hose reel system making you look like an expert your first time out. So give us a call for your fluid transfer needs.





### > Supreme Fluid Transfer Hose Reel

The SFT hose reels were designed with input from industry professionals with experience in fluid transfer processes. They are professionally engineered, and fabricated by certified welders to AWS Industrial Standards, as is all Supreme Services Inc. equipment. Supreme offers the technical experience in flow back operations and other fluid transfer applications, in which the reels are designed for.

#### **Master Control Panel**

The control panel is designed for a single man operation with safety in mind. All control actuators are located on the master control panel, allowing the operator to stand clear of all moving parts of the unit.

#### **Side Swivel Connection**

The side swivel connection is designed with a 4" 150 RF flanged connection. It's design allows the unit to stay rigged up while spooling in or out. The addition of a ball valve allows for total isolation of the hose at the reel.

#### **Pneumatic Payout System**

The pneumatic payout system further ensures that personnel remain clear of the working area of the hose reel. The air actuated payout baller functions from side to side in order that the hose coils properly on the drum, and is controlled without manually touching the hose, thus creating another safety feature.

#### **Pneumatic Band Braking**

Designed in a fail safe mode. The brake engages when the air throttle is released and disengages when the air throttle is actuated. The band braking system allows you to stop at any position and at any time with the hose reel secured.

#### **Welding Securement Plates**

The welding securement plates allow for universal placement of the unit. The plates lock on to the drip pan edge, and should be placed closest to the units outer edge. They can be manipulated to a solid welding point on the deck, without the need to move the entire unit.

#### **The Hose**

The reel is outfitted with 400 ft. of continuous hose. The end area of the hose is a 4" 150 raised face, stainless steel flange. The final working connection is a KLAW Marine BAC (Break Away Connection), which provides 100% instantaneous double shut-off when a predetermined tensile load is applied. To date, KLAW has certified five Supreme Services Inc., employees in the inspection and repair of the BAC.



**Hose Reel**



## > Supreme High Pressure Fluid Transfer

### Product Description:

Supreme Services, newest addition is a 2 or 3 inch 15K high pressure hose reel. Our system can be outfitted with 500' of continuous 2 inch or 3 inch Black Eagle Hose. Supreme, offers these hoses in either 5K or 10K working pressure. With the addition of a Buoy System, Supreme can "float your hose".

For safety to equipment and personnel, Supreme Services also offers it's Hydraulic Quick Disconnect System as a vital component. At the same time also protecting the fluid inside the hose.

### Product Benefits:

- Designed with input from field engineers with experience in the fluid transfer process.
- Professionally engineered for performance and safety.
- Fabricated by certified welders to AWS Industrial Standards.
- DNV 2.7.1 Certified.



### > KLAW Marine BAC

#### Product Description:

This unit protect the hose from damage in case of lost position. Design to break apart before any damage is done to the hose. Trapping any fluid and protecting the environment.

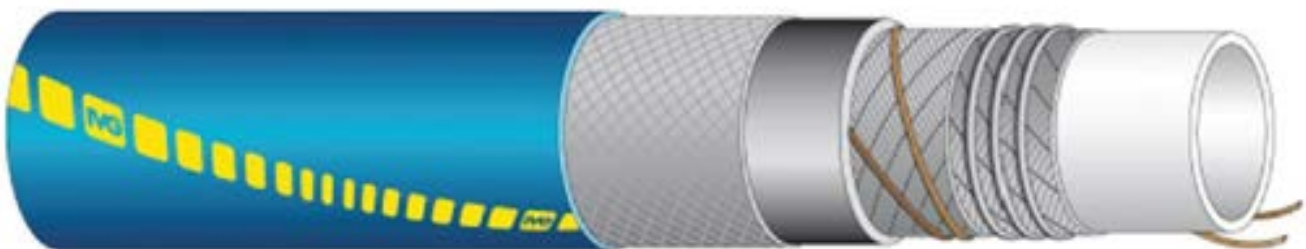


### > Supreme Super Chem-Master 300

#### Product Description:

Supreme Services has a “Exclusively” Designed hose that can do it all. Our SSI SUPER CHEM-MASTER 300, is specially designed by Supreme Services. The reel is outfitted with 400’ of 4” SCM-300 marine grade with a UHMWPE liner for the critical services seen today. The end connector is a 4” 150 ANSI Class R.F. Flange rated for 275 psi working pressure.

- Acid/Chemical
- High Tensile Strength
- Marine Grade
- High Temperatures
- 4:1 Safety Factor



## Natural Gamma Products

Smarter, Safer, and Enviromentally Friendly.

N/G Subs are a replacement for the hazardous and costly R/A Subs. N/G products are manufactured using a low natural radioactive source. In this form the nuclear regulatory commission has deemed that N/G products are exempt from licensing. 10 CFR 40 13 (c) provides that any person is exempt from regulation in this part and from the requirements for a license set forth in Section 62 of the Atomic Energy Act of 1954 to the extent that such person receives, possesses, uses, or transfers among other items. In short N/G products will not need special handling, special storage, or special transportation.



# > Natural Gamma Products

## Natural Gamma Sub

### Applications:

Tubing Convey Perforating (TCP)  
Setting Sump Packers  
Setting Downhole Assemblies Any application  
R/A Subs have been used in the past

\*N/G products can be safely flown to locations along with (any) personnel.

### Features:

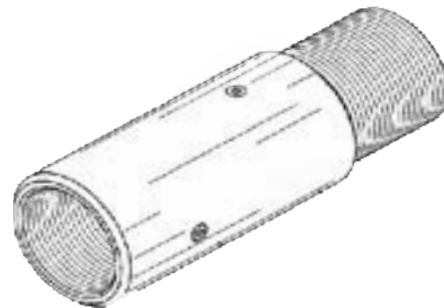
Although radioactive tag markers are not new, this concept is. The N/G Sub utilizes a NON-CONTROLLED NATURAL GAMMA-RAY substance. The N/G Sub, when used in conjunction with a gamma-ray scintillation tool, will provide approximately 200 to 600 gamma-ray counts per second as compared to 3600 to 5000 counts per second with the R/A material presently being used. With normal downhole formations emitting anywhere from 10 to 90 back ground counts per second, the N/G Sub will provide more than enough counts for locating exact depth in the well bore.

## Natural Gamma Permanent Tag

N/G Product comes in a kit. This form is called "N/G Paste". The radioactive source is blended with a \*common thread compound used throughout the oil & gas industry. This product is applied to the threaded pin area of the pipe joint. Once applied you would continue standard operation of making up the pipe. Application instructions are included in every kit. You can also review our video on how to apply "N/G Paste" at [www.supremeservices.com](http://www.supremeservices.com).

### Applications:

Casing Joint Connections  
Tubing Joint Connections  
Wash Pipe Joint Connections



### Size:

2 3/8 PH6 and 8RD  
2 7/8 PH6, 8RD, and CS  
3 1/2 IF and PH6  
4 1/2 IF, PH6, TSHD, and HYDRILL 513

### Extreme Torque Subs:

4" XT 38  
4" XTM 38  
4" XTM 40  
5 7/8 XT 57  
5 7/8 CTM 57

\*With proper notice N/G Subs can be manufactured to meet any customers requirement

When using the N/G Permanent tag kits the amount of kits is determined by the casing or tubing size:

0" – 5" (1) Kit per connection  
5" – 7 5/8" (2) Kits per connection  
7 5/8" – 9 5/8" (3) Kits per connection

### Manufacturer Suggests:

When using the N/G Permanent Tag Kits the amount of kits is determined by the casing or tubing size:

0" – 5" (1) Kit per connection  
5" – 7 5/8" (2) Kits per connection  
7 5/8" – 9 5/8" (3) Kits per connection

## Frac Assist Service Team (FAST)

Offline Assembly and Testing That Provides Huge Cost Savings

The Frac Assist Service Team (FAST) provides highly trained personnel, that offers offline assembly and testing of remote actuated surface iron packages prior to the frac vessels arrival to the rig.

As an innovative leader in the industry, Supreme was the first service company to supply offline assembly and testing of surface frac equipment. Since its inception, FAST has been on most of the Gulf of Mexico's record breaking jobs such as pump rates, pressures, proppant pumped and water depths.

- Scheduled Maintenance Program
- Document Control Process
- Conformance/Corrective Action Database
- Fully Staffed QC / Safety department

This division specializes in small footprint designs that can accommodate the smallest shelf rig to the largest deep water rigs in the Gulf. Supremes FAST utilizes multiple patented items that allow for safer, and more efficient rigups that result in a direct savings for the customer by eliminating costly rig time and safety exposure.

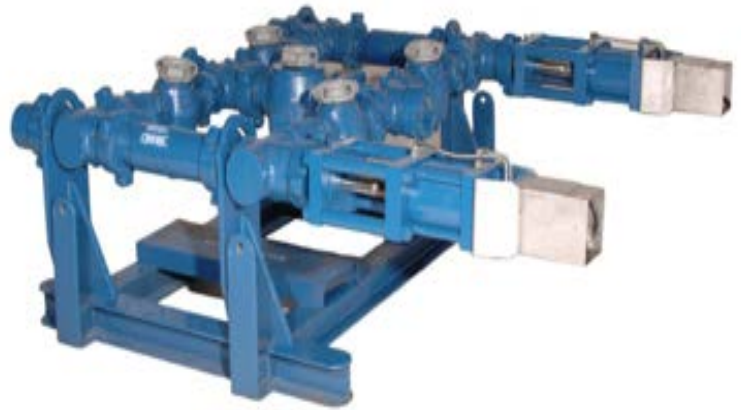




## > Dual Hydraulic Choke Manifold

### Product Specs:

- Sizes Ranging from: 2" - 3"
- Pressure Ratings: 10,000 - 15,000 psi
- Manually and Hydraulically Actuated
- Can build to customer specification



## > Hydraulic Plug Valve Manifold

Allows the fluid flow path to be diverted in several different directions during pumping operations.

### Product Specs:

- Sizes Ranging from: 2" - 4"
- Pressure Ratings: 10,000 - 15,000 psi
- Hydraulically Actuated/Manual if needed
- Can build to customer specification
- Technical specs include small footprints





## > Supreme Frac Head

Primarily used for fracturing, gravel packing, acidizing, perforating, and well testing. Makes up the top of the workstring that allows high rate pumping from a single or multiple lines. Each are custom built to suit the customers needs.

### Product Specs:

- Sizes Ranging from: 2" - 7 1/16"
- Pressure Ratings: 5,000 - 15,000 psi
- Tensile Ratings 4" Head: 680,000 - 1,100,000
- Tensile Ratings 5" Head: 1,050,000 - 1,730,000
- Manually and Hydraulically Actuated
- Fully certified equipment
- Can be configured to meet customer needs
- Intervention services can be rigged up on the top if needed



## > Hydraulic Panels

Supplies the hydraulics needed to operate the frachead and Hydraulic frac manifold and additional valves.

### Product Specs:

- Sizes Ranging from: 4 - 12 Banks
- Pressure Ratings: 3,000 psi
- Fully certified equipment 100% hydraulic backup built in unit
- Operates with 125 psi rig air
- Digital pressure and choke gauges for easy to read pressures and choke position
- Small footprint
- Compact design
- Multiple back-up systems



### > Hydraulic Quick Disconnect

The disconnect is primarily used to detach two high pressure service lines in an emergency situation.

#### Product Specs:

- Sizes Ranging from: 2" - 4"
- Pressure Ratings: 5,000 - 20,000 psi
- Hydraulically Actuated
- Standard and H2S services available
- Can build to customer specification
- DNV certified and inspected



### > Hammerless Union

The hammerless union is a tool free device used to quickly and safely connect surface flow iron to the frac head.

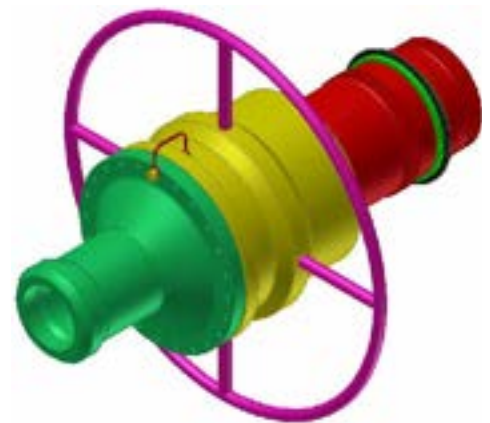
Hammer free connection two piece design features, a stinger and receptacle bore, locking pin prevents the stinger collar from loosening under high pressure and vibration.

#### Product Benefits:

- Fully certified equipment
- The hammerless union reduces rig-up and rig-down times.
- The hammerless union also reduces risk of injury.

#### Product Specs:

- Sizes Ranging from: 2"- 4"
- Pressure Ratings: 5,000 - 15,000 psi



**Patent Pending**

## > Coflexip Lines

### Coflex Acidizing and Fracturing Lines

Used on stimulation boats and work-over rigs world-wide. They are built to handle acidizing liquids and fracturing solutions, at high pressures and flowrates. Field reports show common velocities of 70 to 80 ft/sec (20 to 25 m/s) - in one case 125 ft./sec. (38 m/s) Sand slurries up to 20 lbs./gal. (2.4 SG) have been reported.

The modular concept of coflex hoses means the pipes are engineered for the best possible resistance to the severe stresses and aggressive environment encountered around drilling rigs and service units both offshore and onshore.

#### Product Specs:

- Sizes Ranging from: 2", 3", 4"
- Lengths Ranging from: 25" - 200"
- Pressure Ratings: 10,000 - 15,000 psi
- Standard and H2S services available

#### Product Features:

- Structural stability due to the distinct functions of each component layer. This means that coflex high pressure pipes don't "whip" like hoses or swivel joint systems.
- High crush resistance
- Integral end-fittings
- Only two connections
- Supplied with any standard connector
- No maintenance (no intermediate seals to be replaced)
- Nikaflex treated end-fittings mean no corrosion
- Smaller OD and lower weight compared with conventional hoses of same ID
- Available in various lengths, sizes, and working pressures
- Proven reliability: the industry's confidence in quality is confirmed on hundreds of rigs world-wide



# Flameless Thermal Equipment and Services

Supremes' thermal heating well units are self-contained and easily transported. The small footprint allows for use in confined spaces – specifically production and process facilities.

### **Supreme flameless thermal heating unit applications include:**

- Pipeline clean out
- Paraffin removal
- Asphaltene removal
- Melting hydrate plugs
- Vessel clean out
- Refinery and plant turnaround

### **Supremes' advantages include:**

- Class 1 Div 2 rated
- Non-fired system
- Fully-controlled temperature
- Compact size
- No exhaust-related heating
- Single operator

## > TH 450

### Product Description:

The Supreme TH 450 heats 90 barrels of diesel per hour (1.5 bpm) to temperatures up to 200°F. Additionally, this flameless heating product means no contact with corrosive or flammable exhaust gas/heating.

### Product Specs:

- Weight: 13,800 lbs.
- Dimensions: 10' L x 8' W x 8' 6" H
- Class 1 Div 2 compliant
- Redundant fluid transfer pumps



## > TH 650

### Product Description:

- The Supreme TH 650 heats 120 barrels of diesel per hour (2.0 bpm) to temperatures up to 200°F.
- The unit features hydraulic circuit for TEE pressure pump powered by the thermal unit for a smaller footprint. Additionally, flameless heating means no contact with corrosive or flammable exhaust gas/heating.
- The TH 650 is Class 1 Div 2 compliant and uses redundant fluid transfer pumps.

### Product Specs:

- Weight: 16,500 lbs.
- Dimensions: 12' L x 8' W x 8' 6" H
- Class 1 Div 2 compliant
- Redundant fluid transfer pumps



## Flameless Thermal Products

### > High Pressure Fluid Pump Skid

#### Product Description:

The Supreme High Pressure Fluid Pump Skid features a single operator design and has a maximum pressure of 10,000 psi.

#### Product Specs:

- Weight: 11,500 lbs.
- Dimensions: 8' L x 8' W x 5' 10" H
- Gardner Denver TEE pump
- Max pressure of 10,000 psi
- Flow with 2 ¼ plungers (1.8 bbls per minute)
- Single operator design



### > Thermal Tank System

#### Product Description:

The Supreme Thermal Tank System is designed for maximum heat retention, has a capacity of 88 bbls. and features multi-directional valving.

#### Product Specs:

- Weight: 9,500 lbs.
- Dimensions: 16' W x 8' 3" L x 8' 8" H
- Multi-directional valving
- Designed for maximum heat retention
- Capacity: 88 bbls.





# Offshore Pumping Support

High Performance, High Quality, Pumping Support

Pumping Support Division provides state of the art equipment, expertly trained personnel, administrative, and technical support to accommodate all offshore pumping support operations. Supreme maintains one of the most thorough QHSE programs to ensure a flawless completion of all your pumping jobs.

With more than 30 years of experience and locations across the Gulf Coast, Supreme is sure to deliver all of your pumping support needs promptly and efficiently.

Pumping support for coiled tubing units:

- Killing wells
- Chemical injection
- Fluid transfer
- Pressure testing
- Misc. pumping support

### > Electric Driven Centrifugal Pump

#### Pump Specs:

- 4" x 3" x 13" with 12" IMP-250 Series MCM O'Drill Centrifugal Pump.
- Mechanical Seal Packing, maintenance free and "No Leaks"
- "Fluron Coating" and stainless steel attributes
- Pump unit is set up to specify and configurations they customer may need

#### Pump Power Supply:

- Pump is powered by electric motor (1800RPM-20HP, 3/60/230-460V, 256T, Class 1-Div 1, Groups C&D, Class F Insulation, and Explosion Proof)
- Belt Driven with Sheaves and Guard
- Starter - Sprecher & Schuh Magnetic contact with overloads and resets, all contained in a "NEMA 7 explosion proof " enclosure.

#### Skid Specs:

- 5' x 5' x 5' Square Frame built by STIM Services of Broussard, LA.
- Total Weight of Pump Unit and Skid is 3300 lbs.
- Unit is equipped with four point proper lifting eyes and drip pan with drain for fluid loss.



## > 185 H.P. Triplex Pump

### Product Features:

- Detroit engine
- Auxiliary hydraulics
- Oil system
- Tool box with all expendables
- Spark arrester muffler
- Emergency shut down

### Product Specs:

- Weight: Fluid End: 6,500 lbs.
- Engine End: 7,500 lbs.
- Dimensions: 5'3 W x 15' L x 6'9 H
- Working Pressure: 0 - 5,000 psi
- Test Pressure: 0 - 10,000 psi



## > 250 H.P. Triplex Pump

### Product Features:

- BBL Counter
- Chart Recorder
- Auxiliary Hydraulics
- Oil System
- 15 Speed Transmission
- Tool Box with all expendables
- Spark Arrester Muffler
- Emergency shut down

### Product Specs:

- Weight: 19,000 lbs.
- Dimensions: 7'10" W x 15'8" L x 7'11" H
- Pressure Ratings: 0 - 10,000 psi



## Offshore: Pumping Support

### > 350 H.P. Triplex Coiled Tubing Support Pump

#### Product Features:

- Cummins engine
- Barrel counter
- Chart recorder
- Hydraulic C pump
- Automatic transmission
- Gear reducer
- Covered console
- Auxiliary hydraulics
- Oiler system
- Tool box with all expendables
- Spark arrester muffler
- Emergency shut down

#### Product Specs:

- Weight: 24,000 lbs.
- Dimensions: 7'2" W x 20'7" L x 7'11" H
- Pressure Ratings: 0 - 15,000 psi
- Electrical Certification: Class 1 Division 2



### > 600 H.P. Triplex Pump

#### Product Description:

The triplex pump is Gardner Denver® GD-600, 600-hp rated reciprocating pump with a 14,154 maximum psi rating, producing a maximum flow of 6-bpm with 3" plungers.

#### Product Specs:

- Dimensions: L 215" x W 102" x H 115"
- Weight: 22,000 lbs.
- Pressure Ratings: 0 - 14,154 psi



## ➤ TGE G.D. Medium Pressure Pump

### Product Features:

- Cummins engine
- Barrel counter
- Chart recorder
- Auxiliary hydraulics
- Oil system
- Tool box with all expendables
- Spark arrester muffler
- Emergency shut down

### Product Specs:

- Weight: 17,500 lbs.
- Dimensions: 7'11 W x 15'9 L x 7'5 H
- Working Pressure: 7,500 psi
- Test Pressure: 10,000 psi



MODEL TGE -- WELL SERVICING PUMP (INTERMITTENT SERVICE) --165 HP INPUT															
Plunger or Piston Diameter															
4"		102mm		3 1/2"		89mm		3"		76mm		2 1/4"		70mm	
GPM	PSI	LPM	BARS	GPM	PSI	LPM	BARS	GPM	PSI	LPM	BARS	GPM	PSI	LPM	BARS
245	981	927	68	187	1286	708	89	138	1742	522	120	116	2070	439	143
204	1178	772	81	156	1541	591	106	115	2090	435	144	96	2504	363	173
163	1475	617	102	125	1923	473	133	92	2613	348	180	77	3122	291	215
82	2932	310	202	63	3816	238	263	46	5226	174	360	39	6164	148	425
41	3500	155	241	31	4571	117	315	23	6222	87	429	19	7405	72	510
Plunger Diameter															
2 1/2"		63mm		2 1/4"		57mm		2"		51mm		1 3/4"		44mm	
GPM	PSI	LPM	BARS	GPM	PSI	LPM	BARS	GPM	PSI	LPM	BARS	GPM	PSI	LPM	BARS
95.6	2515	362	173	77.5	3102	293	214	61.2	3928	232	271	46.9	5125	178	353
79.7	3016	302	208	64.5	3727	244	257	51	4714	193	325	39	6164	148	425
63.7	3774	241	260	51.6	4659	195	321	40.8	5892	154	406	31.2	7705	118	531
31.8	75600	120	521	25.8	9318	98	642	20.4	10000	77	689	15.6	10000	59	689
15.9	8960	60	617	12.9	10000	49	689	10.2	10000	39	689	7.8	10000	30	689

### > PE-5 Stack Skid Pump

#### Product Features:

- Detroit engine
- Barrel counter
- Chart recorder
- Auxiliary hydraulics
- Oil system
- Tool box with all expendables
- Spark arrester muffler
- Emergency shut down

#### Product Specs:

- Weight: 13,500 lbs.
- Dimensions: 7'6 W x 11'5 L x 8'5 H
- Working Pressure: 4,500 psi
- Test Pressure: 5,000 psi



### > T-300

#### Product Features:

- Stainless steel fluid end
- Suction for harsh chemicals
- Adjustable pop off with burst plates available
- Storage basket on top of skid, 2.0 - 4.0
- BBL tank capacity
- Emergency shut down
- Oiler system on each plunger
- 30,000 psi gauge
- Chart recorder available
- 2" camlock suction for intake
- 1/16" autoclave discharge with multi adapters available
- 50 gallon fuel tank

#### Product Specs:

- Weight: 6,000 lbs.
- Dimensions: 5'5 W x 8'7 L x 6
- Working Pressure: 0 - 15,000 psi
- Test Pressure: 0 - 22,500 psi
- Rate: 8.15 GPMO





## > Hydroplex Pump 550

### Product Features:

- Burst disc as well as pressure relief valve installed.
- Grease lubrication on each plunger.
- 10,000 psi pressure gauge
- 2" camlock on suction
- Available in air start or electric
- Emergency shut down
- 1-2 Bbl fluid tank capacity
- Deutz engine

### Product Specs:

- Weight: 8000 lbs.
- Dimensions: 8' L x 5' W x 6' H
- Working Pressure: 22GPM @ 6300 psi



## > Hydroplex Pump 950

### Product Features:

- Burst disc as well as pressure relief valve installed.
- Grease lubrication on each plunger.
- 10,000 psi pressure gauge
- 2" camlock on suction
- Available in air start or electric
- Emergency shut down
- 1-2 Bbl fluid tank capacity
- Deutz engine
- Only available in electric
- Oil lubricated on plungers

### Product Specs:

- Weight: 7000 lbs.
- Dimensions: 9' L x 5' W x 6' H
- Working Pressure: 1BPM @ 5000 psi



## ➤ Supreme Services Sand Infuser

### Product Dimensions:

- Tare Weight 17,000 lbs.
- (W) 8' x (L) 12' x (H) 10'
- Sand Capacity: 12,000 lb. Sand Reservoir
- Blender Capacity: 5 bbl. Pilot Tank w/ Agitator

### Fluid Pump Specs:

- Make: Mission
- Model: Magnum-Sand Master
- Size: 2-Independent 4 x 3 x 13
- Output: 350 GPM/8.3 BPM (Fresh Water)

### Engine Specs:

- Make: Detroit Diesel 4-71
- Model: 1043-7000
- Displacement:
- In-line 4 Cyl./4.7L NA 155 BHP @ 2100 RPM  
407 lb./ft @ 1600 RPM Air Start



## Offshore: Pumping Support

### > Transfer Pumps

- We have transfer pumps that range in size from 1" to 6" and .7 to 756 gallons per minute.
- Emergency shut down and spark arrestor.

Size	2"	3"
G.P.M.	180	378
Total Head (Up to)	94	89
Priming Lift	20	20
Max Pressure	41 psi	38 psi
Running Time	4-5 hours	4-5 hours
Weight	105 lbs.	157 lbs.
Dimensions	24" x 18" x 20"	24" x 18" x 20"

Size	4"	6"
G.P.M.	750	1700
Total Head (Up to)	115'	160'
Priming Lift	28'	28'
Max Pressure	50 psi	58 psi
Running Time	24 hours	12.5 hours
Weight	1334 lbs.	3250 lbs.
Dimensions	N/A	66" x 118"



### > Air Diaphragm Pumps

- Acid service available
- Do not exceed 125 psi air supply
- All calculations were done using water
- Chemical/acid ready pumps available upon request

Size	1"	2"	3"
G.P.M.	35	181	242
Max Pressure	125	125	125
Priming Lift	30.6'	30.6'	31.2'
Total Head (Up to)	275"	275"	275"
Weight Alum./ Stainless	26/36	78/117	132/198
Max CFM	50	100	150



# Land Pumping Support

High Performance, High Quality, Pumping Support

Supreme Services pumping support division provides state of the art equipment, highly trained and experienced personnel, administrative support, and technical support to accommodate onshore pumping support operations. Supreme maintains the most thorough quality and safety programs in the industry.

With locations throughout Louisiana and Texas, Supreme is sure to deliver all your pumping support needs promptly and efficiently.

- Pump down services
- Pumping support for coil tubing units
- Maintaining back-side pressure during hydraulic fracturing operations
- Killing wells
- Swapping fluids
- Pressure testing
- Misc. pumping support
- Acidizing services





## > 600 H.P. Acid Pump Truck



- Supreme's high pressure treating pump truck provides powerful and versatile pump capacity for chemical treatments and overflush into high pressure systems. This best in class tanker trailer can pump at pressures over 8,500 psi, and treats high pressure wells up to 15,000 psi. It can also be used for general pumping, acidizing, and gravel packs.

HP	Pump	Plunger Size	Max Psi	Max Rate BPM	Front Tank Gallons	Middle Tank Gallons	Rear Tank Gallons
600	SPM	3	15,000	6	Displacement	N/A	1,000 1,000

### > Acid Dock



- Capacity: 65,000 gal. raw acid
- Mixing upwards 18,000 of 15% HCL acid
- Provide quality assurance control for titration testing
- Pumps also available to pump acid
- Three 5,000 gal. transport tankers
- Capable of mixing different acid recipe based on formation needs
- Formation Testing
- Downhole Solutions



## ➤ 1200 H.P. Dual Pumper



- Two independent 600 hp diesel driven triplex 600 hhp pumping systems, climate controlled operators station, (2) 11 bbl. stainless steel blending tanks, (2) 5" x 6" C-pumps, data acquisition, and 150' of 2" 15K high pressure iron.

Max Discharge Pressure	15,000 psi	1034.2 bar
Max Working Pressure	14,147 psi	975.4 bar
Maximum Flow Rate	11.8 bpm @ 3734 psi	1876 lpm @ 257.5 bar
Total Rated HP	1200 HP @ 2100 rpm	1566 Kw @ 2100 rpm

### > 1900 H.P. Dual Pumper



- Two independent 950 hp diesel driven quintuplex 1000 hhp pumping systems, climate controlled operators station, (2) 11 bbl. stainless steel blending tanks, (2) 5" x 6" C-pumps, data acquisition, and 150' of 2" 15K high pressure iron.

Max Discharge Pressure	15,000 psi	1,034.2 bar
Max Working Pressure	14,147 psi	975.4 bar
Maximum Flow Rate	19.6 bpm @ 3734 psi	3116 lpm @ 257.5 bar
Total Rated HP	2100 HP @ 2100 rpm	1566 Kw @ 2100 rpm

## > 2250 H.P. Pump Down/Frac Pump



- Diesel driven quintuplex pump with 4" plungers 2500 hhp, 11 bbl. stainless steel blending tank, (2) 5" x 6" C-pumps, 150' of 3" 15K high pressure iron, and data acquisition.
- Diesel driven triplex pump with 4.5" plungers 2250 hhp, 11 bbl. stainless steel blending tank, (2) 5" x 6" C-pumps, 150' of 3" 15K high pressure iron, and data acquisition.

Diesel driven quintuplex pump with 4" plungers 2500 HHP											
Plunger Diameter	Output Per Rev	100/635		150/953		200/1271		250/1588		330/2096	
		GPM	PSI	GPM	PSI	GPM	PSI	GPM	PSI	GPM	PSI
4"	2.18	218	15,305	326	11,815	435	8,861	544	7,089	718	5,371
Input Power: BHP		2159		2500		2500		2500		2500	

Diesel driven triplex pump with 4.5" plungers 2250 HHP											
Plunger Diameter	Output Per Rev	75/476		115/731		200/1271		300/1906		330/2096	
		GPM	PSI	GPM	PSI	GPM	PSI	GPM	PSI	GPM	PSI
4.5"	1.65	124	14,147	190	14,147	330	10,502	496	7,002	545	6,365
Input Power: BHP		1137		1743		2250		2250		2250	

## Land: Pump Support

### > Data Van

#### Product Features:

- Satellite, cellular, and fax communication systems.
- Real time data acquisition software.
- Quality assurance and quality control lab.
- Data van with state of the art remote control stations for frac pumps, blenders, and liquid additive units simultaneously.
- Multiple highly customized customer displays and analysis capabilities.
- Pressure analysis software.
- Shore based and onboard power access.

#### Product Benefits:

Data Acquisition and control centers provide a centralized command center to control all critical well site equipment while monitoring, recording, and supervising pump operations. Data vans reduce the number of equipment operators required to complete the treatment while greatly improving the job quality, real time data gathering, and presentation.

- Centralized and monitored control of pumping operations.
- UPS and CPU available for reliable operation and back-up.





# Wireline Support

## Expert Wireline Support for High Pressure Complex Jobs

The wireline support division provides pressure control equipment and experienced personnel to meet or exceed customer expectations. Whether it's a simple bond log or a complex horizontal multi-stage frac job, Supreme is safe, efficient, and provides unprecedented service quality.

Supreme Services has developed complete wireline pressure control packages designed to function together as a highly efficient system.

### Rental Services Include:

- Grease injectors with integrated hydraulic controls for BOP's, tool traps, etc.
- Grease heads with or without a line wiper/packoff
- Greaseless wireline control heads
- Wireline BOP's, tool traps, head catchers, pump in subs, lubricator, quick test subs, hydraulic vent/purge subs
- A full range of flange sizes
- A full range of flange quick test subs
- Forum HLA system with night caps and ball dropper
- Ezi-Shear/Seal

The wireline business has evolved into complex logging and perforating jobs. Supreme has created a division that uses highly experienced personnel and the newest, most efficient equipment in the industry to ensure ultimate customer satisfaction.



### > Grease Injectors

#### Product Function:

Grease injectors use either a diesel-driven, air operated, or electric hydraulic grease pump as the primary pump. An air operated grease pump as a completely separate backup pump or a dual air unit. They are made to be easy to use and very robust.



#### Product Features:

##### Single or Dual Engine Diesel Driven Grease Injectors

- The hydraulic unit controls for dual BOP, tool trap, head catcher, pack off, and line wipers.
- Dual injection capable
- Accumulator bank for a hydraulic unit back-up
- Working Pressure: 5,000 - 15,000 psi
- Compact Design
- Dual air operated grease units available in 10K and 15K WP. Skid units have an all steel construction with four (4) point lift. 130 gal. grease reservoir and 60 gal. return tanks.

##### Components Include:

- Dual ARO or WIWA Air Operated Grease Pumps
- Dual Air Regulator Control
- Dual Pressure Gauges (Air & Grease)
- Dual Air Regulator Valves
- Medium Pressure Autoclave Needle Valves and Fittings
- Two (2) Dual Ported 10K Live Swivel Wet Reels

##### Dual Air Operated Grease Injectors

- 10,000 – 15,000 psi
- Dual injection capable
- Dual ARO or WIWA air operated grease pumps.
- Two Dual Ported Live Swivel Wet Reels.
- Integrated Grease Supply & Return Tanks
- DNV 2.7-1 Skids Available

##### Electric Grease Injection Unit

- Class 1 Division 2 certification
- 15,000 psi
- Air operated back up grease injection pump
- Dual injection
- Two Dual ported Live Swivel Wet Reels



## > All-in-One Grease Injection System

### Features:

- Hydraulic controls for Stuffing box/line wiper, pack-off, head catcher, and tool trap.
- Gauges to independently monitor hydraulic pressure to each component
- WLV accumulator system with full API 16ST close-open-close capacity.
- Digital transducer and digital pressure gauge to monitor well pressure at the grease injector
- Audible/Visual low level fluid and air alarms



### Features:

- Combines Grease Injector, hydraulic controls, and WLV Accumulator system into one footprint
- Fully enclosed unit
- Certified PRV's
- DNV 2-7-1
- Hydraulically powered hose reels
- Once hoses have been deployed, unit doors can be closed to keep work area clean and organized



## > Grease-less Control Heads

These control heads are designed to be run with today's encapsulated wirelines.

### Types and Sizes:

- Type I, II, III style control heads
- 10K, 12.5K, and 15K
- These heads have 2 or 3 stages or in the case of the the Type III are modular
- Multiple bottom subs with different connections to utilize with many different packages.



## > Accumulators

Accumulators in stock ranging from 2.5 gallons to 54 gallons with multiple banks available. All accumulator units are offshore compliant.

### Options:

- 2.5 gallons - 54 gallons
- Pressure ratings: 0 - 3000 psi
- Multiple configurations available
- Single-Seven banks
- Accumulator system with full API 16STclose-open-close capacity.



## > Hydraulic Latch Assembly

### Product Description:

Supremes' Hydraulic Latch Assembly (HLA) is proven to improve safety and increase efficiency in the field. With the HLA installed, there is no longer a need for a man in a man-basket to be in the red zone, allowing for frac crews to continue to operate. The HLA is also simple enough to repair in the field reducing downtime.

### Hydraulic Latch Assembly Advantages:

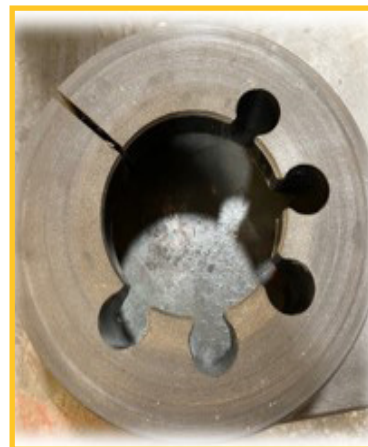
- Connects and disconnects in 5 minutes or less.
- Removes the hazard of sending up someone in a man basket.
- Simple enough to repair on site. No more worrying about sending it back to the manufacture every time something needs work.
- Built in guide to simplify correct placing, even on a windy day.
- Visual indicators to improve safety and operation.
- Control boxes available to operate multiple latches at once.
- 5.125" ID, 10K & 15K
- Offshore version has Class I Div II certification.



## > Lubricator Connector Clamps

### Product Features:

- Made from Urethane
- Lightweight (less than 10 lbs.)
- Easy to install
- Comes pre-installed on lubricator tube
- Eliminates drops
- Prevents lubricator nut from loosening during operations
- Maintains the required 25 ft. lbs. of torque on unions



### > Ezi-Shear/Seal

#### Product Description:

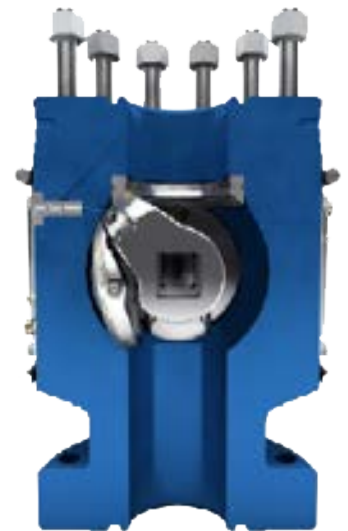
Supremes' Ezi-Shear/Seal is available in 7- $\frac{1}{16}$ " 15M flanged with a 6- $\frac{5}{8}$ " ID capable of cutting both coil tubing and wireline. Ezi-Shear/Seal provides a superior cutting and sealing capability for standard, offshore or high-pressure applications where an additional level of pressure barrier contingency is required.

#### Product Features:

- Wide range of cutting capabilities
- Independent shearing and sealing faces
- Compact design, smaller than traditional shear and seal valves
- Dual hydraulic actuators
- Monoblock body
- Highly resistant to wear

#### Product Benefits:

- Cuts Slickline, Braided, E-line and Coiled Tubing
- Compact design gives improved wellhead access
- Increased torque through rotational forces
- Reduced leak paths
- Improved safety and reliability
- Reduced redress frequency



## > Wireline Pressure Control Packages

ID	Pressure Rating	Description
3"	5,000	Pressure Control Packages Single Manual BOP
3"	5,000	Pressure Control Packages Manual Dual Manual BOP
4 7/8"	5,000	Pressure Control Packages Single Manual BOP
4 7/8"	5,000	Pressure Control Packages Single Hydraulic BOP
4 7/8"	5,000	5 1/2" Casing Lubricator, Pump in Sub (PIS), Quick Test Sub (QTS), Tool Trap, Cased Hole Dual Pack-off
6 7/8"	5,000	Pressure Control Packages Single Manual BOP
6 7/8"	5,000	7 5/8" Casing Lubricator, Pump in Sub (PIS), Quick Test Sub (QTS), Tool Trap, Cased Hole Dual Pack-off
6 7/8"	5,000	7 5/8" Open Hole Dual Pack-off Systems
8 7/8"	5,000	9 5/8" Casing Lubricator, Pump in Sub (PIS), Cased Hole Dual Pack-off
8 7/8"	5,000	9 5/8" Open Hole Dual Pack-off Systems
3"	10,000	Pressure Control Packages Dual Hydraulic BOP
3"	10,000	Pressure Control Packages Triple Hydraulic Flanged Bottom BOP
3"	10,000	Pressure Control Packages Quad Hydraulic Flanged BOP
4 1/16"	10,000	Pressure Control Packages Quad Hydraulic Flanged Bottom BOP Studded Top
5"	10,000	Pressure Control Packages Dual Hydraulic BOP
5.125"	10,000	Pressure Control Packages Triple Hydraulic BOP
5.125"	12,500	Pressure Control Packages Triple Hydraulic BOP (Flanged & Union)
5.5"	10,000	Pressure Control Packages Quad Hydraulic Flanged BOP
7"	10,000	Pressure Control Packages Dual Hydraulic BOP
7.06"	12,500	Pressure Control Package Triple Hydraulic BOP
3"	15,000	Pressure Control Packages Quad Hydraulic Flanged BOP
4 1/16"	15,000	Pressure Control Packages Quad Hydraulic Flanged BOP
5.125"	15,000	Pressure Control Packages Quad Hydraulic Flanged BOP
6.39"	15,000	Pressure Control Package Triple hydraulic flanged bottom BOP
4 1/16"	20,000	Description Pressure Control Package Quad hydraulic flanged bottom BOP

### Additional Rentals:

- Flanged and union quick test subs are available for all pressure control packages.
- Multi-range inner seals are available for BOP's (.092 - .03125).
- Shear blind rams are available in triple and quad sets in BOP's.
- Hydraulic 5K, 10K, and 15K grease injectors.
- Air operated 10K and 15K grease injectors are available.
- Each BOP is configured for a braided line, slickline, and shear seal wireline rams.
- 5.125" 15K packages can be configured with 4, 6, or 7 flanged hydraulic ram sets.



### > Wireline Component Rentals

#### Products:

- Lubricator
- Flanges
- Flange Quick Test Subs
- BOPs
- Tool Traps
- Head Catchers
- Pump in Subs
- Crossovers
- Grease Heads
- Line Wiper / Pack Off Combos
- Lifting Clamps
- Lifting Plates
- Small Footprint Air Operated Test Pumps (10K & 15K)
- High Volume (10g/min)/High Pressure (15kpsi), air operated test pumps (DNV 2.7-1 Skids Available)
- Totes – Diesel or glycol
- “Greaseless” Wireline Control Heads
- Liquid Seal Stuffing Boxes

\* All equipment meets API 6A and NACE MR0175 specifications, including full material traceability





### > On Demand Electro Magnets

#### O.D.E.M

The O.D.E.M., is an alternative to permanent magnets used today. Permanent magnets are always energized picking up wellbore trash before achieving their missions. This can be a costly and time consuming process, causing multiple wireline runs and operation shut down.

The O.D.E.M. allows the operator to target the fish before energizing the magnet. Once the operator tags the bottom, it's then picked up a couple of feet, and energized with the panel to a recommended setting allowing the magnet to retrieve the fish. The operator then retrieves the magnet with fish (POOH) at a recommended 60 ft. per minute.

- Packages are portable and can be transported via; trucking, marine, and helicopters.
- Process procedures are shipped with every job.
- Training is available with 24-hour notice.

ODEM SIZE	O.D.	WEIGHT	PULL STRENGTH
2.500"	2.500"	21 lbs.	129 lbs.
3.500"	3.500"	27 lbs.	129 lbs.
4.500"	4.500"	57 lbs.	250 lbs.
5.500"	5.500"	69 lbs.	250 lbs.
6.375"	6.375"	102 lbs.	300 lbs.
7.375"	7.375"	118 lbs.	300 lbs.



Above is the O.D.E.M., with and without "Extender Sleeve."

The O.D.E.M. has a Gearhart-Owens connection referred to as a "GO BOX" connection, and is offered in three different sizes.

- 2.500", 4.500", and 6.375".

The O.D.E.M. can be outfitted with an "Extender Sleeve" which offers additional sizes; 3.500", 5.500", and 7.365".

The "Extender Sleeve" purpose is to extend the O.D. + 1".

- Sizing ranges when needed.

#### Applications:

- 2.500" and 3.500" O.D.

Used in Tubing and Smaller ID's

- 4.500", 5.500", 6.375", and 7.375" O.D.

Used for Casing Applications

## > Ultra-Permanent Magnets

### Product Description:

Permanent magnets are a useful tool when objects are lost in the well bore utilizing one of the most powerful magnetic elements available. When used properly, the permanent magnet can be very cost effective.

The Ultra Permanent Magnets are very strong and can be used to temperatures under 400 °F without deteriorating strength, and never need a charge. The Ultra Permanent Magnets are used to retrieve small oddly shaped pieces of ferrous metal from the well bore that are uncatchable by other types of retrieving tools. The smaller ones can be run on slick line, and the larger ones on braded line without the need for electric line units.

All sizes come with a "GO" connection but the larger ones also have a 2 3/8 connection on them to be run on pipe.

**Casing Magnet Information Chart**

Magnet O.D.	Magnet Actual Wt.	Wt. w/ Shipping Sleeve	Retrieval Wt.
4 1/2 "	50 lbs.	65 lbs.	135 lbs.
5 1/4 "	55 lbs.	70 lbs.	135 lbs.
5 3/4 "	60 lbs.	75 lbs.	135 lbs.
6"	70 lbs.	85 lbs.	135 lbs.
7 3/4 "	80 lbs.	94 lbs.	135 lbs.



**Tubing Magnet Information Chart**

Magnet O.D.	Magnet Actual Wt.	Wt. w/ Shipping Sleeve	Retrieval Wt.
1 3/8 "	8 lbs.	9 lbs.	15 lbs.
1 11/16 "	12 lbs.	13 lbs.	20 lbs.
2 1/8 "	15 lbs.	18 lbs.	40 lbs.
2 1/2 "	18 lbs.	20 lbs.	80 lbs.
3 1/2 "	30 lbs.	50 lbs.	100 lbs.



# Supreme Offshore Services

## Upscale Utility Fleet for Dependable Transportation

Supreme Offshore Services, Inc. maintains four offshore supply vessels in the fleet. The boats are some of the newest running in the Gulf with the most prestigious amenities. The fleet has capabilities of service 200 miles offshore.

- Supreme Offshore hosts a multitude of services including:
- Drilling and P & A Support
- Oceanographic Survey Vessels, Diving Support
- Stand-by Vessels Construction & Decommissioning
- Production Support – Methanol Pumping
- Spot Hire and Hot Shot Vessels

Supreme Offshore is capable of accommodating both company and service personnel with separate quarters for management. Supreme Offshore Services OSVs are USCG certified for “stand-by” status and can be used to evacuate the Gulf of Mexico with up to 50 personnel on board. All vessels have high pressure and volume fire monitors to support offshore platforms. The vessels are ABS load certified for cargo transport. Supreme Offshore specializes in the transportation of liquids such as methanol and fuel support for offshore facilities. All Supreme vessels are equipped with Dynamic positioning (DP1).

## Offshore Services



➤ OSV PENNY F



➤ OSV BERTHA D



➤ OSV KARLA F



➤ OSV WARREN THOMAS

### Hull Steel:

- Length: 166
- Beam: 36'
- Draft: 12'
- Deck: 107 x 28

### Capacities:

- Passengers: 20 Total
- Crew: 4 - 5
- Deck Cargo: 350 Long Tons
- Fuel: 60,000 Gallons
- Lube: 800 Gallons
- Contaminated Oil: 800 Gallons
- Potable Water: 20,000 Gallons
- Ballast Water: 38,000 Gallons
- Liquid Mud: 105,000 Gallons
- Methanol: 33,000 Gallons
- Gross Tons: 98
- Net Tons: 67
- Speed: 12.3 Knots

### Consumption:

- Fuel: 105 Gallons/Hour

### Machinery:

- Main Engines: (2) Cummings KTA-38MO
- Horsepower: 1800
- Generators: (2) Cummings Eng. 6CTA8, 99 KW

### Navigation Equipment:

- DP-1:
- 2 Furuno Radars:
- 1 Furuno Echo Sounder
- 1 JRC AIS System
- 1 Furuno SSB
- 1 Neocode Encoder/Decoder
- 2 Icom VHF Radios
- 1 Furuno Loud Hailer
- 1 JRC Navtex Receiver

### Certifications Held:

- USCG: 200 miles offshore
- FCC: Radio License

# Inventory Management & Storage (IMS)

Accessible Inventory Storage and Management for convenient Inventory Control

Supremes' Inventory Management Services Division provides a secure and cost-effective means of inventory storage and management in a 90,000 sq. ft. area with 12,300 sq. ft. of indoor environment with 24/7 access.

Customers can store excess or staged delivery equipment in a secure area with protection from direct exposure to the corrosive effects of the natural environment. Supreme can provide inside and outdoor storage, cleaning and servicing functions, pressure testing, and dockside access all with 24-hour access.

Supreme utilizes vertical and horizontal stackable racks that can provide added protection for pressure sensitive equipment, which will reduce the need for costly replacement of fatigued parts. This also allows the equipment to be safely stacked, increasing available square footage.

- Inside/ Outside Storage (limited Climate Controlled area)
- Inventory Management
- Vertical and Horizontal Racks
- Dockside Access

Utilizing our dockside access, allows the customer to deliver its equipment directly to location rather than transporting this equipment to a dock.





## > Climate Controlled Storage Area

- 12,300 sq. ft. of industrial climate-controlled storage space.



## > Vertical Storage Racks

- Provide added protection for pressure sensitive equipment, reducing need for costly replacement of fatigued parts.
- Racks can go up to 30 ft.
- Pressure and function testing can be done periodically for stored equipment to maintain good working order.



## > 5 - 15 Ton Overhead Bridge Cranes

- By utilizing overhead bridge cranes, equipment up to 15 tons, can be moved safely and efficiently.
- Supreme offers a total of 11 bridge cranes in our IMS facilities.

